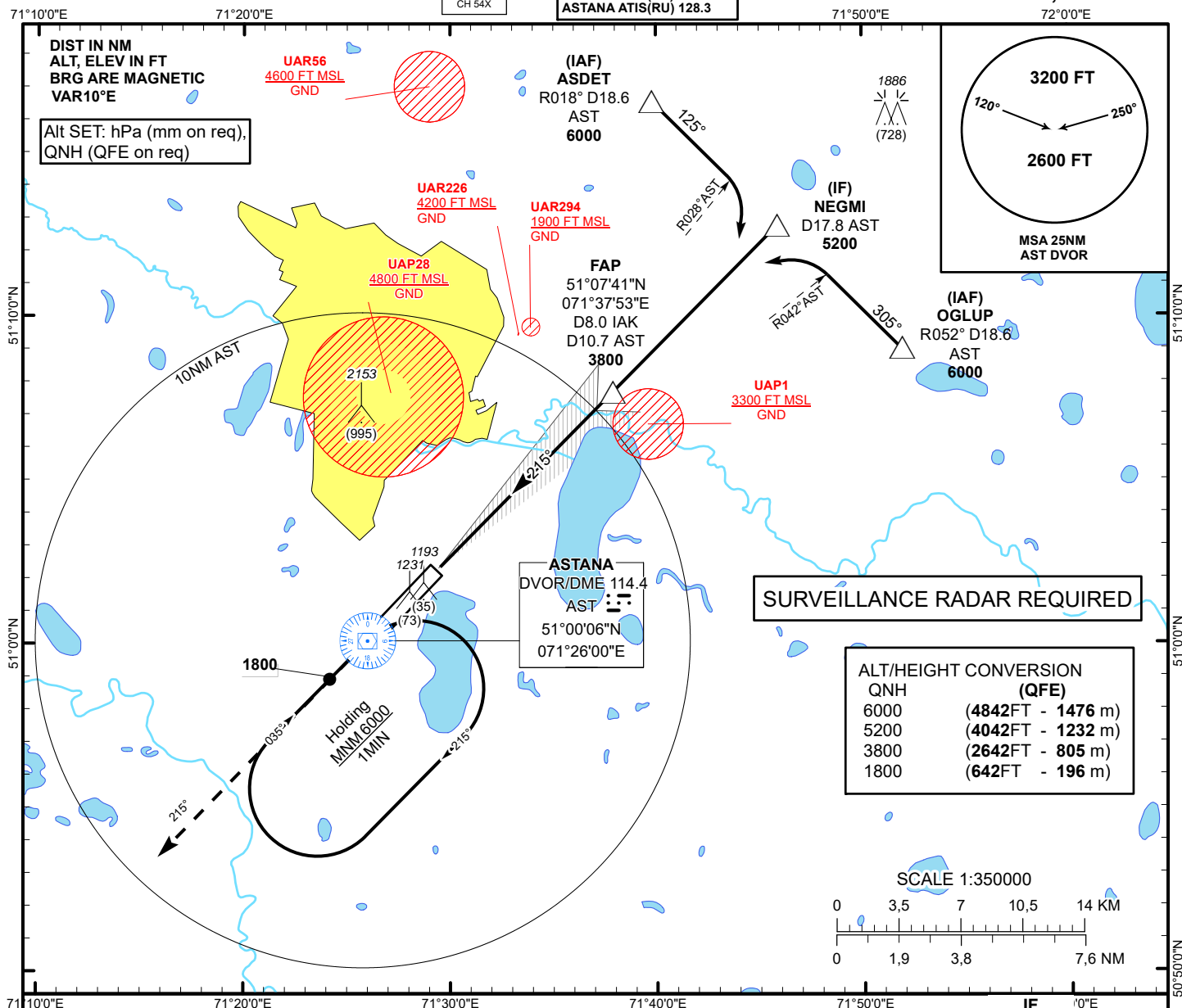


INSTRUMENT
APPROACH
CHART - ICAOAERODROME ELEV **1166FT**
HEIGHTS RELATED TO
THR RWY 22 - ELEV **1158FT**ILS
LLZ 111.7
IAK
GP 333.5
CH 54XASTANA TOWER 135.5
ASTANA APPROACH 124.6
ASTANA RADAR 120.7
ASTANA GROUND 119.6
ASTANA ATIS(EN) 129.5
ASTANA ATIS(RU) 128.3ASTANA/NURSULTAN NAZARBAYEV
INTERNATIONAL AIRPORT
ILS/DME Y CAT II, III RWY 22

MISSED APPROACH

Climb on track 215° to 4000ft. After climbing 1800ft radar vectoring will be provided.

RADIO FAILURE:
In case of RCF climb on track 215° to 2400ft or above.
Outbound to D6.7 NM AST, turn RIGHT to AST.
Climb to 6000 ft to AST and join to holding pattern.
Missed approach turn speed limited to 240kt IAS maximum.

DVOR/DME
ASTILS RDH 54
ELEV 1158
THR RWY 22TRANSITION ALT
10000(IF) NEGMI
AST D17.8
IAK D15.1
5200FAP
IAK D8.0
AST D10.7
3800

GP 3.0°

215°

CHANGE: Tower FREQ, MSA.

Aircraft Category		A	B	C	D	THR - DME IAK	1.0	2.0	3.0	4.0	5.0	6.0	7.0	8.0
Straight-in Approach OCA/H	CAT I	1360(200)	1360(200)	1360(200)	1360(200)	DME AST	3.7	4.7	5.7	6.7	7.7	8.7	9.7	10.7
	CAT II	1260(100)	1260(100)	1260(100)	1263(103)	ALTITUDE	1531	1852	2175	2499	2826	3154	3484	3800
	CAT III	CAT III approved				HEIGHT	373	694	1017	1341	1668	1996	2326	2642
DME IAK ZERO RANGED TO THR RWY 22														
Aerodrome Operating Minima DH ft x RVR(CMV)	CAT I													
	CAT II													
	CAT III					GS		Kt	80	100	120	140	160	180
						Rate of descent		ft/min	420	530	630	740	840	950

ASTANA
ILS/DME Y CAT II, III

AERONAUTICAL DATA TABULATION

ILS approach to RWY22 from NEGMI, ASDET, OGLUP	
Fix/point	Coordinates
AST DVOR/DME	51° 00' 05.6"N 071° 26' 00.4"E
IAK D8.0 AST D10.7 (FAP)	51° 07' 40.9"N 071° 37' 52.9"E
NEGMI (IF) AST D17.8	51° 12' 45.3"N 071° 45' 52.6"E
ASDET (IAF) R018°AST D18.6 AST	51° 16' 33.4"N 071° 39' 46.4"E
OGLUP (IAF) R052°AST D18.6 AST	51° 08' 57.3"N 071° 51' 58.1"E
THR RWY 22	51° 02' 01.65"N 071° 29' 01.44"E
IAK LOC	51° 00' 18.8"N 071° 26' 21.0"E